

 XGRIDS



Lixel K1
Compact Yet Powerful



Lixel K1

Lixel K1 is XGRIDS' compact handheld scanner. Integrating 56MP panorama cameras and 360 ° LiDARs within its body, it generates cm-level colored models for professionals and 3d hobbyists, offering convenient scanning and reconstruction experience.



1kg



color point cloud
in real-time



360°
scanning

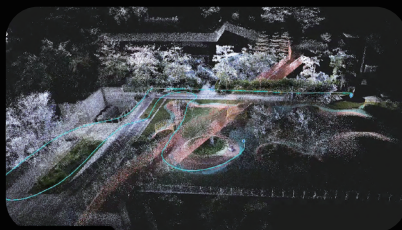


convenient
operation



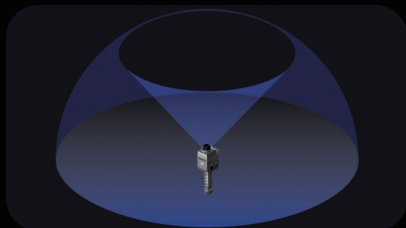
Compact and Lightweight

With a 1kg (with battery) aluminum alloy body, K1 highly integrated vision modules and LiDAR.



Real-Time Color Point Cloud, Delicate Presentation

36 million pixels imaging provides exquisite real-time true-color point clouds.



Panoramic Capture, No Omissions

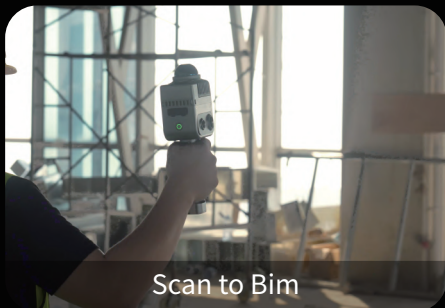
360° x 360° true panoramic vision, 360° laser horizontal scanning field.



Convenient Operation, Collect as You Wish

Its low learning cost makes professional 3D data collection and modeling extremely simple.

Application Scenarios



Software

PC



LixelStudio

An all-in-one 3D post-processing software that offers a range of features, including point cloud viewing, editing, model generation, and post-processing.

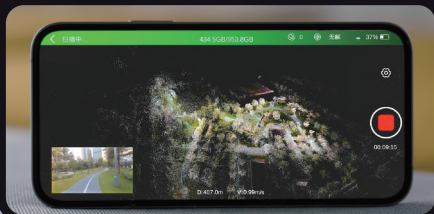


APP



LixelGO

Mobile-controlled operational workflow, real-time preview of scan results, and one-screen monitoring of device status.



Specification

Device Performance

Power input	14.4V
Power consumption	<20W
Weight	1kg
Data interface	USB3.1 Gen2
Storage Capacity	TF card 256G (Replaceble)
Connection mode	Wifi/Bluetooth
Operating temperature	-20°C~50°C
Protection level	IP54
Product shell	Navigational Aluminum
Power supply	Fast-lock battery/external power
Operating Time	1.5h
Battery capacity	28.8wh
Number of Cameras	4
Visual-Aided Positioning	Supported
APP WiFi distance	20m
RTK module	Supported

Scan Performance

Laser lines	40
Laser Class	Class1 / 905nm
Relative Accuracy	1.2cm
Absolute Accuracy	3cm
Repeat Accuracy	2cm
Horizontal Accuracy	0.015°
Working Range	0.1m~40m@10%, 70m@80%
LiDar FOV	360**~7~-+52°
Scan mode	Mobile
Scan speed	200,000 points/s
Resume Scanning from Breakpoint	Supported

Visual Module

Camera FOV	Color panorama HDV 360**360°
Camera resolution	56MP

Data & Storage

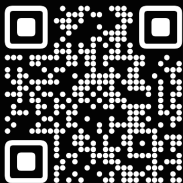
Calculating mode	Real-time calculating/ Mixed calculating
Calculating software	Lixel Studio post-processing software for Win
Point Cloud Format	.Las
Color point cloud	Supported

Contact Us

Sales and Partners: sales@xgrids.com

Brand and Business Consulting: enterprise@xgrids.com

Follow Us



LinkedIn



Youtube



Facebook



X

Company Address: 29th Floor, Colorful Information Innovation Center,
3176 Keyuan South Road, High-tech South District, Nanshan District, Shenzhen
Company Website: WWW.XGRIDS.COM

*Copyright belongs to Shenzhen XGRIDS Innovation Technology Co., Ltd. Reproduction is authorized only with permission.